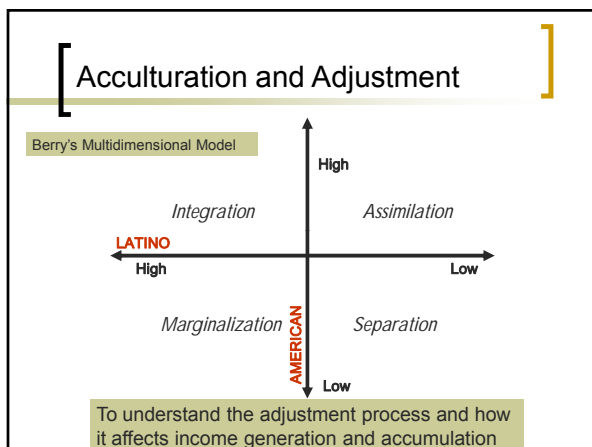
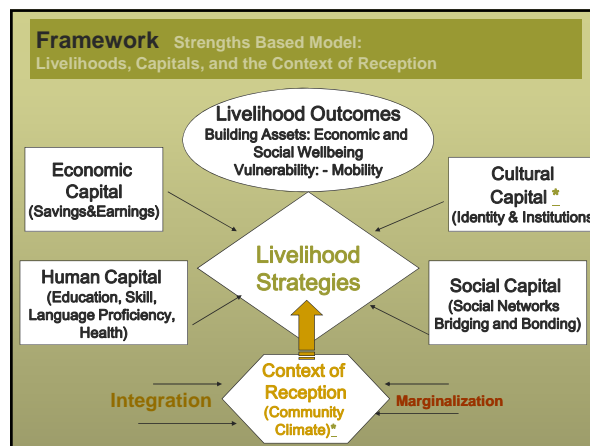


Cambio de Colores 2009
St Louis 2009

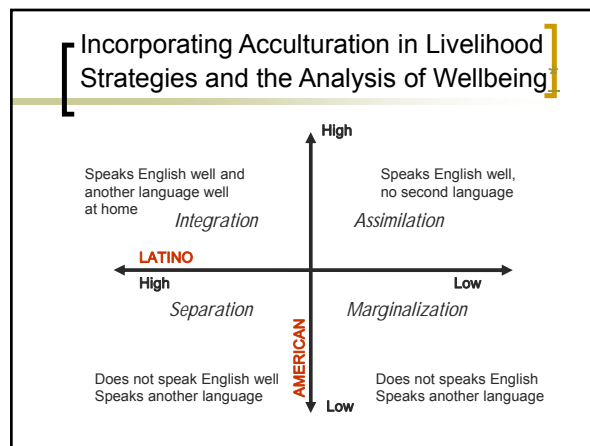
Networks and Context of Reception in Accumulation Strategies of Latinos in Rural Communities of the Midwest - A Quantitative Analysis

Corinne Valdivia
Pedro Dozi, Stephen Jeanetta, Lisa Y. Flores, Domingo Martinez, Anne Dannerbeck



- ## Capitals and Community Climate
- Livelihoods – Capitals & acculturation:
 - Cultural capital: ethnicity, race, ability to speak a language other than English;
 - Human capital: work experience, employment, educational attainment, English ability, mobility, gender, and age;
 - Acculturation: interaction of capitals & values in the process of integration, three measures.
 - Networks and CC – context of reception:
 - Community social capital index; and
 - Community climate proxy (racial profiling index).

- ## Acculturation SK & Climate
- Three acculturation measures (Integration, Assimilation, and Separation), and cultural identity; and Individual characteristics - race, gender, and age.
 - Community characteristics (Z) include networks – a social capital index of the community. A community climate proxy is the disparity index, a measure of racial profiling reported by the Attorney General of Missouri.



Model of Income Capitals Acculturation and Climate

Two specified: for Native (N) and for Foreign born (F):

$$L(\text{Wage})_i = \mathbf{X}_{ij}\beta_j + \mathbf{Z}_t\delta + \sigma_{ij}\lambda_j + \eta_{ij}$$

- L (Wage) is a logarithm of wages - *earnings*
- X is a vector of individual characteristics - *capitals*
- Z is a vector of community characteristics – *networks and climate*
- λ is the inverse Mill's ratio
- η is an error term
- DATA: CENSUS 2000 for three regions in Missouri
 - AG Disparity Index 2000 for the corresponding regions

Regression Results - coefficients

Variables	Origin	
	Natives	Foreign
Work Experience	0.293	0.202
Acculturation-integration	0.280	0.137
Acculturation-assimilation	0.024*	0.042
Good English and Educ. cross effect	0.061	0.064
Able to speak another language	0.264*	0.461
Racial profiling	-0.046	-0.081
Gender: Female	-0.174	-0.512
Mobility	0.022	-0.018
Age	0.031	0.219
Education	0.064	0.052
Social Capital index	0.174	0.219

- Only significant values presented - # Not significant

Human Capital Findings

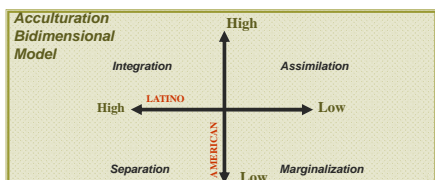
- Education and English ability combined have a positive effect on income
- A second language also has a positive effect on earnings
- Policies that value other languages and facilitate not only access to English but education will contribute to increasing the income earnings of Latinos
- These also contribute positive economic impacts to the receiving communities through the expenditure patterns, and the second generation

Social Capital Findings

- > Social capital has a positive effect for both foreign-born and native Latinos
- > It is stronger for foreign born
- > Networks are sources of support and of information about the receiving community
- > => Support for bridging organizations and activities that foster connections

Acculturation Findings

- While assimilation had only a positive effect on foreign born but not as strong as acculturation.
- The Integration Acculturation strategy had a positive effect on earnings of both native and foreign born.
- When compared to separation, marginalization had no significant effect on earning.
- => Policies should foster or at least not hinder bilingualism as it contributes to income generation.
- => Integration also has a positive impact on the second generation.



Mobility & Climate Findings

- Mobility findings are opposite to those in the dominant community, as moving does not improve income for foreign born.
- Racial profiling, an element of community climate, has a negative effect on the income of both native and foreign born, especially the later.
- => concern in terms of economic impacts and development in the receiving communities – Long term effects.

[Further Research]

- Asset accumulation strategies in Missouri
- Acculturation – a measure of 24 indicators
- Mobility – beyond having moved in the last 5 years
- Social Capital – bonding, bridging and linking
- Context of Reception – through the eyes of the newcomers
- Three regions

[THANK YOU!
QUESTIONS...]

Cambio Center

<http://cambio.missouri.edu>

Project Site

<http://www.cambio.missouri.edu/Assets/>